

EH 50

Ganci automatici
Automatic couplings
Vollautomatische
Anhängerkupplungen
Crochets automatiques

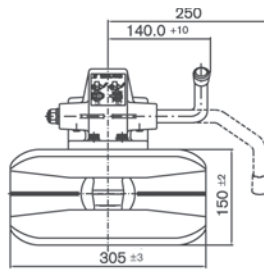
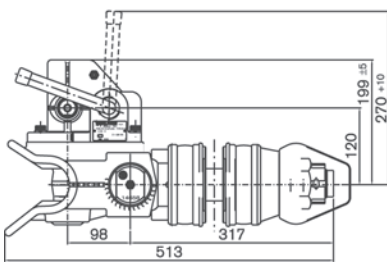
Per occhioni - For drawbar eyes
Für Zugösen - Pour anneaux

Ø
50

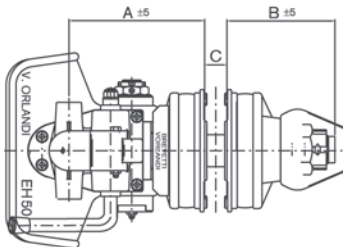
94 / 20 / CE

Dati tecnici - Technical data - Technische Daten - Données techniques

Tipo Type Typ Type	Versioni Versions Ausführungen Versions	Flangia Hole pattern Lochbild Entr'axe mm	Valore D D-Value D-Wert Valeur D kN	Peso Weight Gewicht Poids kg	94 / 20 / CE	
					Classe Class Klasse Classe	Omologazione Homologation Genehmigung Homologation
EH 503	EH 503A0 EH 503B0	120x55	130	37	C50-X	e3 00-0395
EH 502	EH 502A0 EH 502B0	140x80	220	39	C50-X	e3 00-0394
EH 501	EH 501A0 EH 501B0	160x100	220	39	C50-X	e3 00-0393
EH 531	EH 531A0 EH 531B0	160x100	220	41		

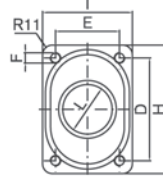
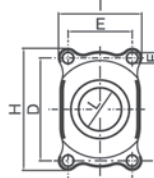


Dimensioni A/B: quote del gancio montato (su veicolo)
Dimensions A/B: dimensions of the coupling installed to the vehicle
Dimensionen A/B: Dimensionen der Kupplung im Fahrzeug
Dimensions A/B: dimensions du crochet monté sur le véhicule



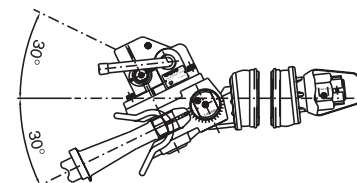
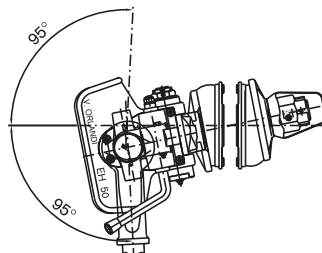
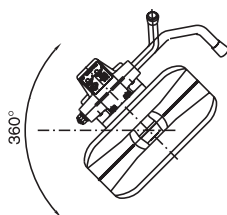
EH 501-EH 502-EH 503

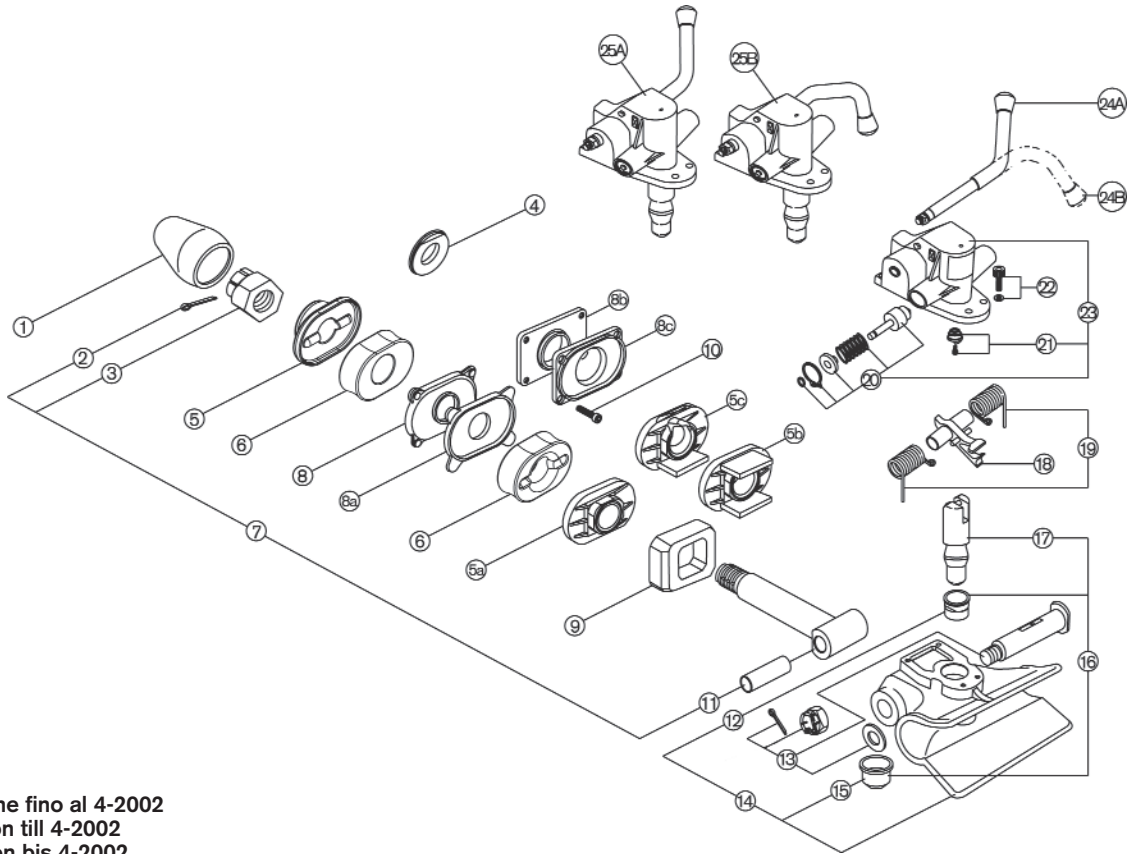
EH 531



Versione - Version Ausführung - Version	
A	Leva alta Action lever upwards Handhebel aufwärts Lever d'ouverture vers le haut
B	Leva bassa Action lever downwards Handhebel abwärts Lever d'ouverture vers le bas

Tipo - Type Typ - Type	A (mm)	B (mm)	C (mm)	D (mm)	E (mm)	F (mm)	H (mm)	I (mm)	L (mm)
EH 503	210	170	35	120	55	ø14	164	118	ø74
EH 502	212	168	35	140	80	ø19	190	130	ø84
EH 501	212	168	35	160	100	ø19	190	130	ø92
EH 531	215	165	35	160	100	M16	200	140	ø93





*In produzione fino al 4-2002
*In production till 4-2002
*In Produktion bis 4-2002
*En production jusqu'en 4-2002

POS.	Tutti i tipi All types Alle Typen Tous les types	Tipo - Type - Typ - Type					
		EH 501	EH 531	EH 502	EH 503	EH 501/511* 521*/531*/502*	EH 503*
1	RG00034						
2	RG00064						
3	RG00172						
4						RG00237	RG00237
5		RG00297	RG00297	RG00297	RG00027	RG00042	RG00028
5a		RG00296	RG00296	RG00296	RG00028	RG00042	RG00028
5b						RG00239	
5c						RG00238	
6		RG00241	RG00241	RG00241	RG00037	RG00036	RG00037
7	RG00233						
8/8a		RG00030		RG00029	RG00031		
8b			RG00135			RG00135	
8c			RG00134			RG00134	
9		RG00038	RG00038	RG00038	RG00038		
10			RG00209			RG00209	
11	RG00004						
12	RG00088						
13	RG00002						
14	RG00235						
15	RG00236						
16	RG00232						
17	RG00231						
18	RG00298						RG00188
19	RG00178						
20	RG00181						
21	RG00091						
22	RG00185						
23	RG00191						
24A	RG00186						
24B	RG00187						
25A	RG00229						
25B	RG00230						